

Arizona Department of Child Safety

Fostering Sustainable Connections

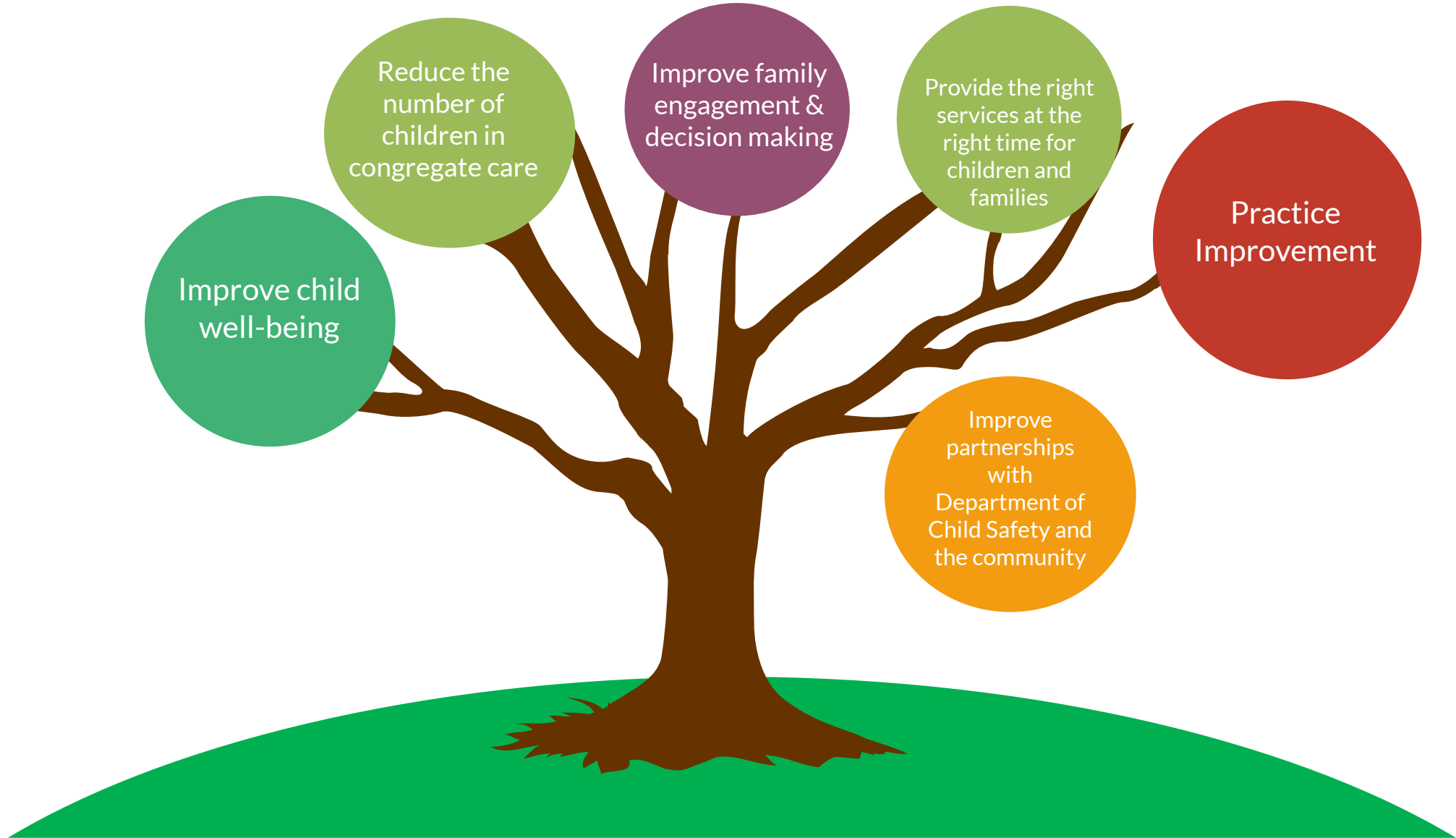


Fostering Sustainable Connections Overview

- Fostering Sustainable Connections (FSC) is a Arizona Department of Child/Youth Safety program intervention which works to engage youth living in congregate care by identifying connections and supportive relationships in their life.
- The goal is to reduce the number of child/youth currently living in congregate care (group homes and shelter care); in addition to reducing the length of time they spend there. This program also seeks to identify family-like settings, or permanent placement options and increase family involvement in decision making .
- The program's framework is the Family Finding Model created by Kevin Campbell. Methods used by the Family Engagement Specialists to engage children/youth in the Family Finding process include engagement activities and electronic search engines. Fostering Sustainable Connections works closely with the family, relatives, the child/youth, and life-long supportive networks for the child/youth to ensure a variety of services and supports are available to help the child/youth and those caring for them.



Fostering Sustainable Connections Goals:



Family Finding Model

Fostering Sustainable Connections consists of **four** stages:

- ***Discovery and Engagement*** – The Family Engagement Specialists locate and engage those who know the child best by sharing information and assisting in building a lifelong supportive network for the child.
- ***Planning***-Family Engagement Specialists will facilitate meetings and discussions with relatives and others important to the child with a focus on planning.
- ***Decision Making/Action Plan*** - Decisions will be made during a Team Decision Making meeting called "***Life Long Connections***". The goal is to identify a family-like placement, transition planning, and the identification of services and supports for the child and family to ensure successful placement.
- ***Follow-up*** –Ensure formal and natural supports are in place, accessible, timely, and meet the needs of the child and family. Any follow-up actions identified during the Life Long Connections meeting will be monitored by the Child Safety Specialist.



Kevin Campbell Video

- <https://youtu.be/rMRF9o4ZrEg>



Family Engagement Specialist Role

- Review case files, staff with DCS Case Managers and Supervisors
- Outreach & contact with family and connections
- One on one meetings with child/youth (two per month)
- Engagement activities with youth to include:
 - Mobility Mapping
 - Tree of Life
 - All About Me Book
 - Connectedness Map
 - Three Houses
- Facilitate Blended Perspective meetings
- Coordinate Life Long Connections meetings
- Documentation



Blended Perspective Meeting

- A BPM is a youth focused meeting, facilitated by the Family Engagement Specialist which explores the youth and family strengths. The participants make commitments to the children/youth which can assist in supporting their unmet needs. A statement is created at the end which guides the team in developing a plan for permanency. The BPM should be held during times and in locations most convenient and comfortable for the family/connections.



Life Long Connections Meeting

- An LLC Team Decision Making meeting is a placement focused meeting facilitated by a TDM Facilitator in which placement options are explored and a plan is developed to support that placement. During this meeting there is discussion around current supports/connections, unmet needs, ideas, plans and action steps. Multiple plans may be developed; in each plan developed, the key players are assigned tasks and are responsible for ensuring the completion to assist in supporting the transition.



Family Engagement Specialist Interview

<https://www.abc15.com/news/region-phoenix-metro/central-phoenix/dcs-using-special-program-to-find-foster-childrens-relatives>

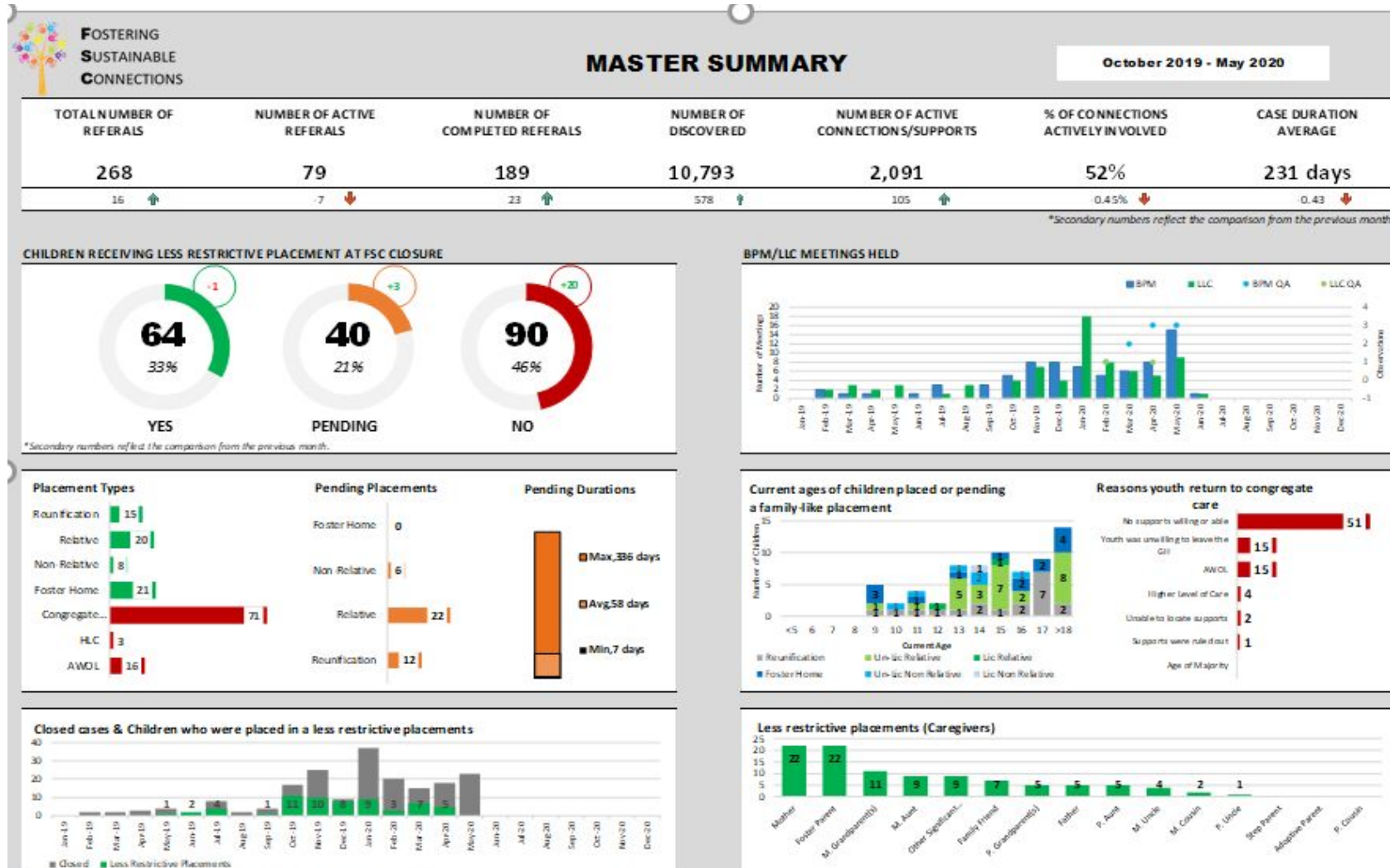


Department of Child Safety Role

- Refer eligible children/youth
- Make case files available
- Staff case with FES while referral is open
- Attend Site Based Team Meetings monthly
- Attend Blended Perspective Meetings
- Attend Life Long Connections Meeting
- Follow-up after FSC Closure



Data Collection



QUESTIONS?



THANK YOU



Lauren Zanotti, BSW

Fostering Sustainable Connections Statewide Coordinator

Department of Child Safety

3003 N. Central Avenue

Phoenix, AZ 85012

Office:(602)255-2562

Cell:(480)338-8375

Lauren.Zanotti@azdcs.gov

